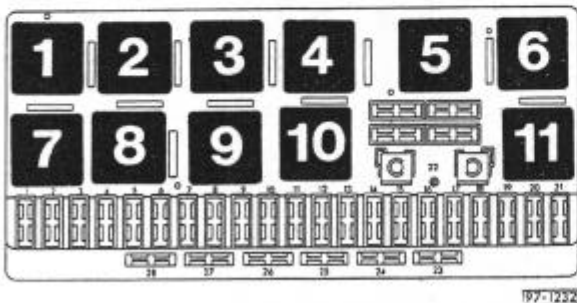


Radio, stereo with active loudspeakers

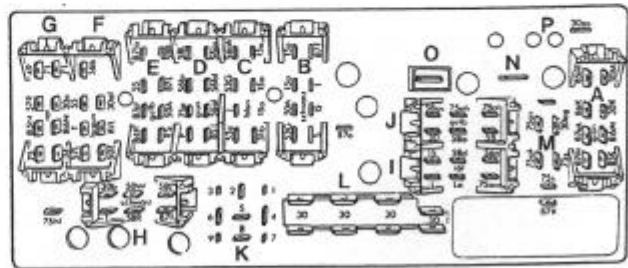
from July 1988

Position of relays
Relay plate fuse holder:



97-1232

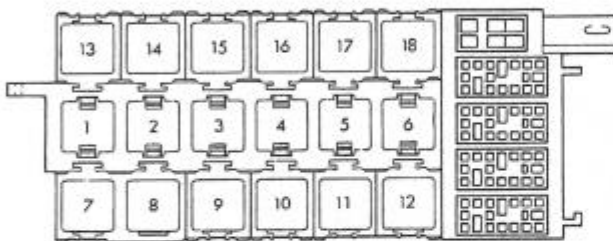
Identification of connections



97-412

- A - Multiple connector (grey) for wiring loom, air conditioner
- B - Multiple connector (black) for wiring loom, front right
- C - Multiple connector (blue) for wiring loom, dashboard
- D - Multiple connector (green) for wiring loom, front left
- E - Multiple connector (yellow) for wiring loom, front left
- F - Multiple connector (brown) for wiring loom, dashboard
- G - Multiple connector (red) for wiring loom, dashboard
- H - Multiple connector (black) for wiring loom, rear
- I - Multiple connector (red) for wiring loom, dashboard
- J - Multiple connector (yellow) for wiring loom, dashboard
- K - Multiple connector (black) for relay socket 3
- L - Single connector - terminal 30
- M - Single connector for various optional extras
- N - Single connector - output, glow plugs
- O - Single connector - output, intake manifold preheating
- P - Single connector - output, fuse no. 20

Additional relay carrier:



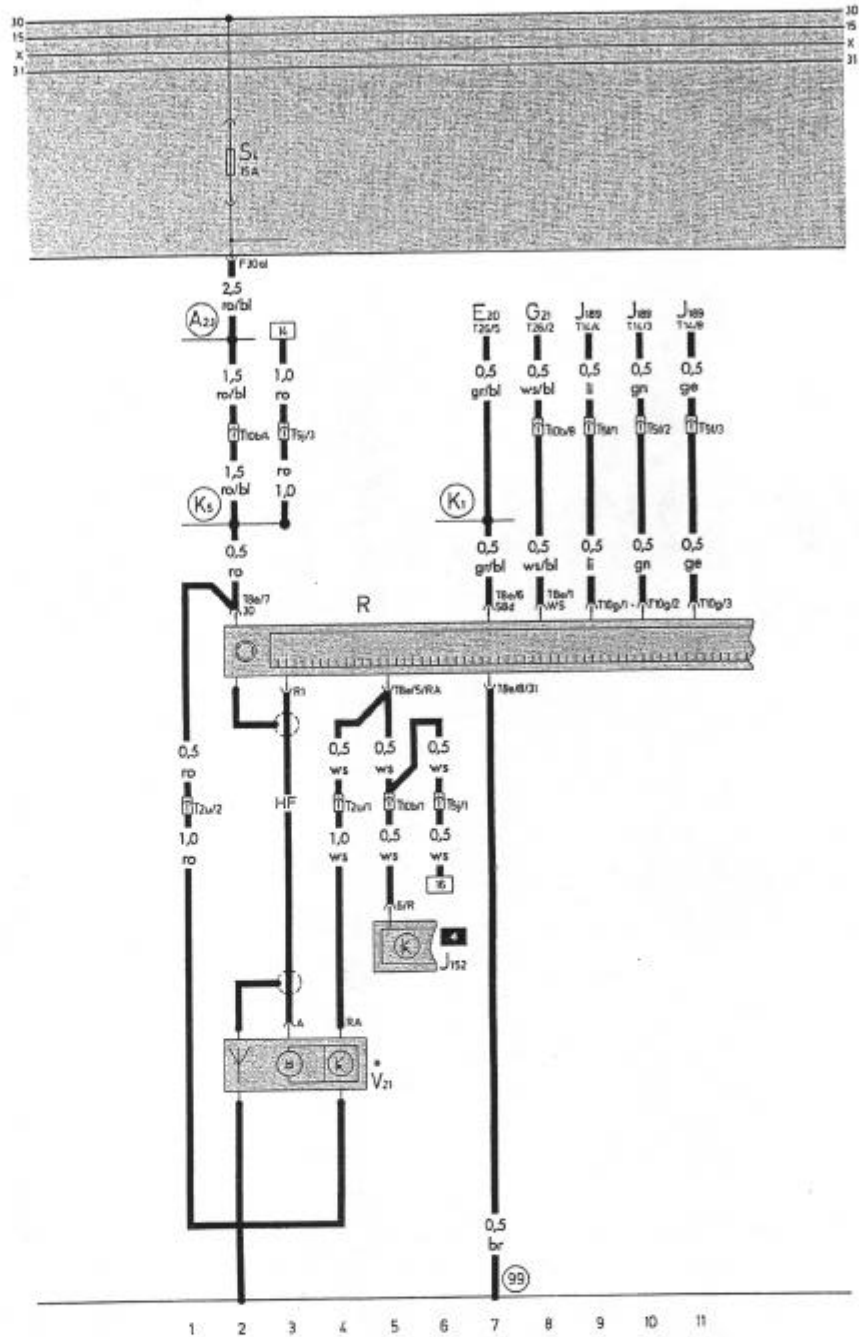
97-4119

Fuse colours

- 30 A - green
- 25 A - white
- 20 A - yellow
- 15 A - blue
- 10 A - red
- 5 A - beige

4 - Buzzer for side lights and radio

Radio, stereo with active loudspeakers



Wiring Colours:

- ws = white
- sw = black
- ro = red
- br = brown
- gn = green
- bl = blue
- gr = grey
- li = lilac
- ge = yellow

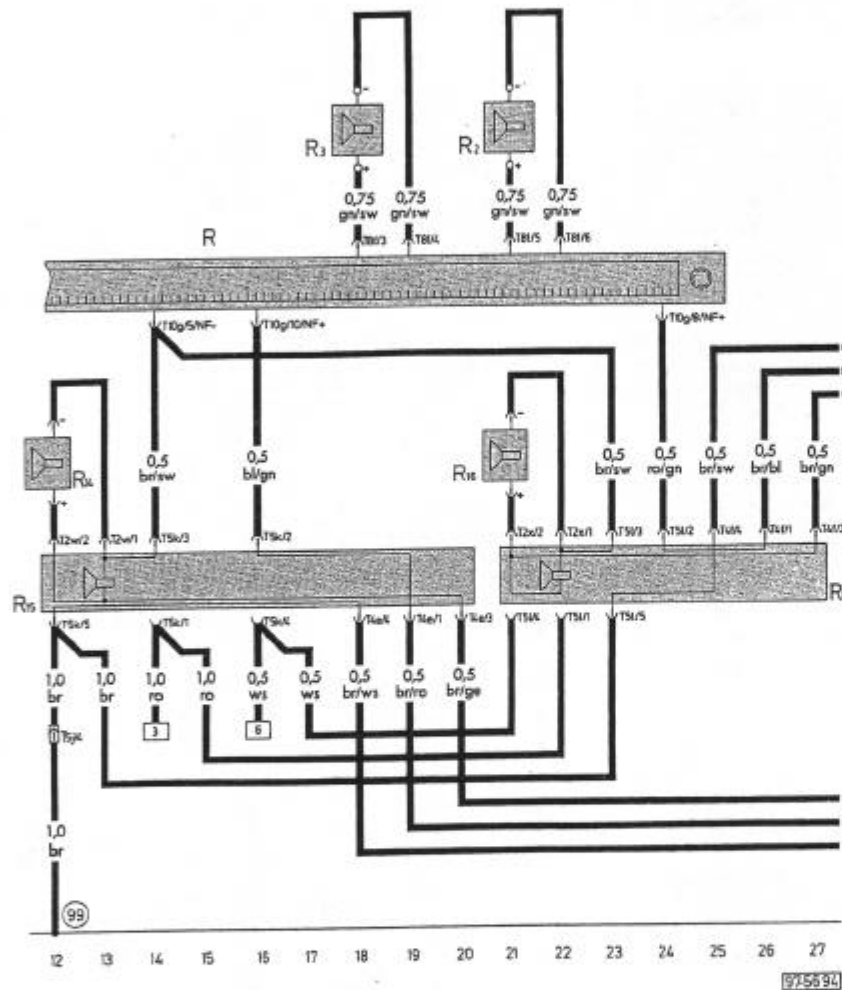
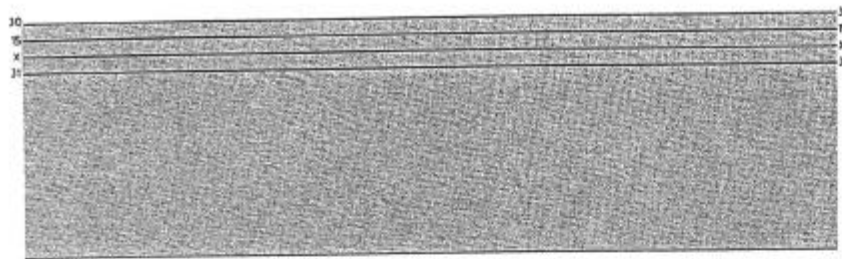
- E 20 - Instrument/dash panel lighting control
- G 21 - Speedometer
- J 152 - Buzzer for side lights and radio
- J 189 - Auto-check system
- R - Connection for radio
- S 4 - Fuse in fuse box
- T 2u - Connector 2 pin, behind console
- T 5f - Connector 5 pin, brown, behind dash panel
- T 5j - Connector 5 pin, yellow, behind console
- T 8e - Connector 8 pin, behind console
- T 10b - Connector 10 pin, brown, behind dash panel
- T 10g - Connector 10 pin, behind console
- T 14 - Connector 14 pin, black, dash panel insert
- T 26 - Connector 26 pin, black, dash panel insert
- V 21 - Aerial motor

- 99 - Earth connection, in console wiring loom
- A23 - Connection (30a), in dash panel wiring loom
- K1 - Positive (+) connection (58), in console wiring loom
- K5 - Positive (+) connection (30a), in console wiring loom

* - Power aerial illustrated; for rear window aerial with amplifier, see "Radio, stereo"

92-693

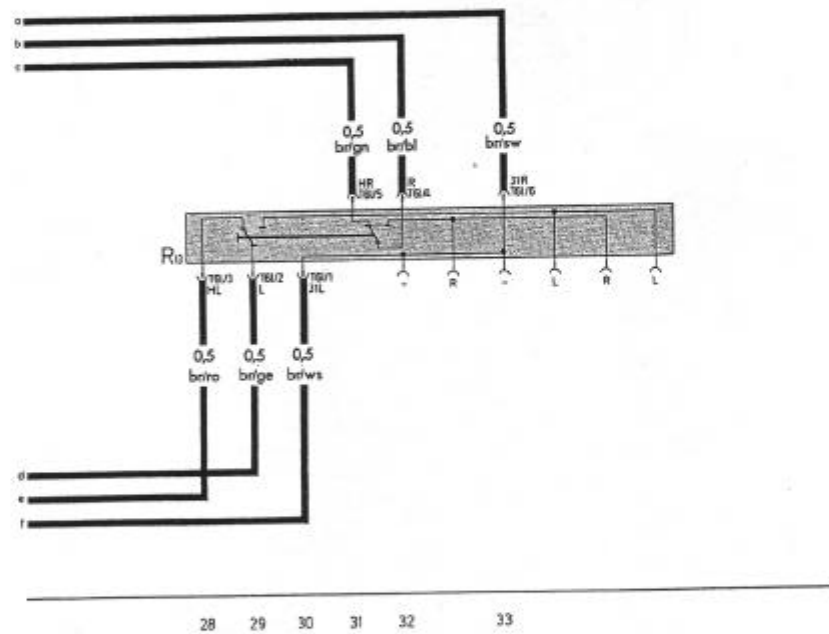
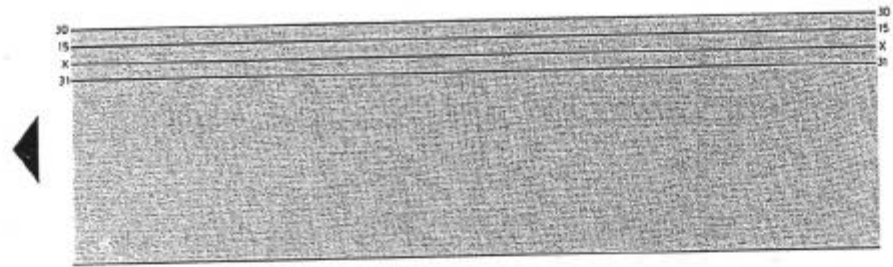
Radio, stereo with active loudspeakers



- Wiring Colours:**
 ws = white
 sw = black
 ro = red
 br = brown
 gn = green
 bl = blue
 gr = grey
 li = lilac
 ge = yellow

- R - Connection for radio
 - R 2 - Front left loudspeaker
 - R 3 - Front right loudspeaker
 - R 14 - Treble loudspeaker rear left
 - R 15 - Bass loudspeaker rear left
 - R 16 - Treble loudspeaker rear right
 - R 17 - Bass loudspeaker rear right
 - T 2w - Connector 2 pin, under rear shelf
 - T 2x - Connector 2 pin, under rear shelf
 - T 4e - Connector 4 pin, under rear shelf
 - T 4f - Connector 4 pin, under rear shelf
 - T 5j - Connector 5 pin, yellow, behind console
 - T 5k - Connector 5 pin, under rear shelf
 - T 5l - Connector 5 pin, under rear shelf
 - T 8f - Connector 8 pin, brown, behind radio
 - T 10g - Connector 10 pin, behind console
- 99 - Earth connection, in console wiring loom

Radio, stereo with active loudspeakers



- Wiring Colours:**
 ws = white
 sw = black
 ro = red
 br = brown
 gn = green
 bl = blue
 gr = grey
 li = lilac
 ge = yellow

R 13 - Headphone connection
 T 61 - Connector 6 pin, under rear shelf

92-5635